

# PIN Climate Resilience



- Created in 1992 in Czech Republic
- Largest NGO from Central and Eastern Europe
- More than 40 countries
- 26 countries with Emergency and Climate
- Over 2,300 staff worldwide
- Annual turnover: 207 million EUR (2024 data)

#### Europe

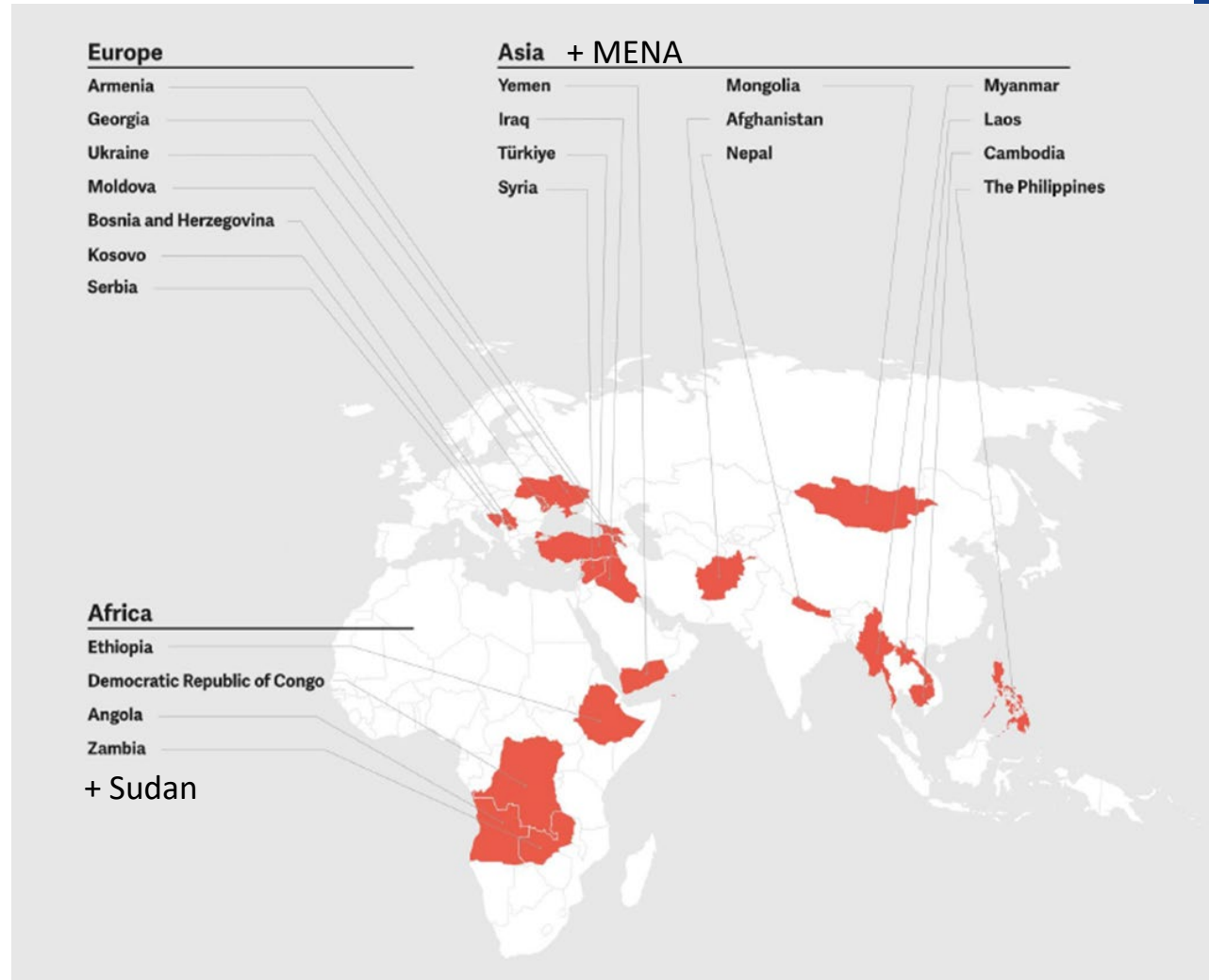
Armenia  
Georgia  
Ukraine  
Moldova  
Bosnia and Herzegovina  
Kosovo  
Serbia

#### Asia + MENA

Yemen  
Iraq  
Türkiye  
Syria  
Mongolia  
Afghanistan  
Nepal  
Myanmar  
Laos  
Cambodia  
The Philippines

#### Africa

Ethiopia  
Democratic Republic of Congo  
Angola  
Zambia  
+ Sudan



# Climate resilience programs



## DRM and EWS

DRM governance  
Hazard monitoring and  
EW dissemination  
Community based DRM  
combined with NbS  
Preparedness and  
Anticipatory action



## Adaptation

Landscape / watershed  
management  
Climate smart agriculture  
Water management



## Just transition

Skills development and job  
creation  
MSMEs empowerment  
Renewable energy  
Circular economy

# PIN in Syria

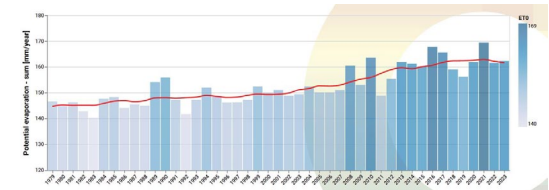
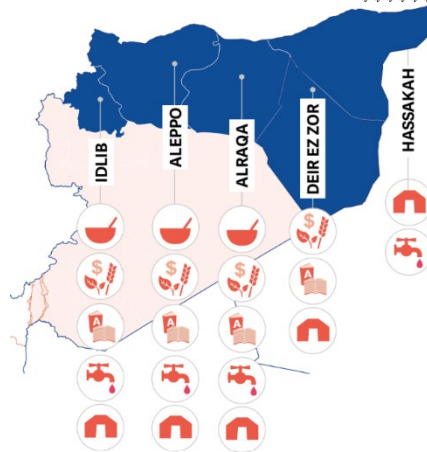
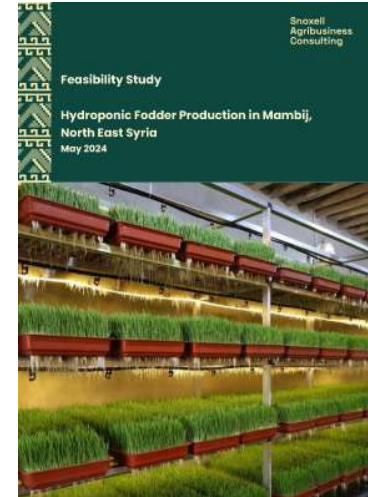
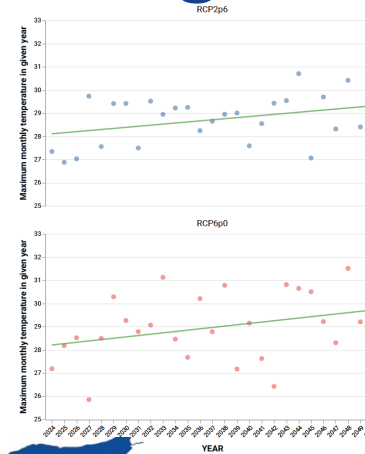
- Present since 2012
- Budget 2024-2025: 45 million EUR
- People reached: 961,588 people (53% women)
- Emergency programs
  - Education and PSS
  - Shelter and NFI (i.e: earthquake response)
  - Food security
  - Multipurpose cash
- Climate related programs

# Adaptation / NRM programming

- Climate Smart Agriculture trainings and ToTs
- Sustainable energies
- Integrated Water Resource Management
- Environmental and Agriculture Education

## Innovations

- CS Agriculture technologies
- Agri-climate and risk analysis



# Participatory Recovery of Productive Landscapes, Livelihoods & Enterprises (PRPLE)



# Participatory Recovery of Productive Landscapes, Livelihoods & Enterprises (PRPLE)

## **Component 1: Enhanced local governance on risk management**

- Capacity building of District & Municipal offices (agri, envi, water & landscape)
- Support to governmental monitoring & interpretation system (water, agri)
- Capacity building among local CBOs and Communities in Risk Assessment & adaptation
- Participatory design and development of climate adaptation measures & DRM plans
- Support to localized solutions in selected watersheds and vulnerable areas (sub-granting mechanism)

# Participatory Recovery of Productive Landscapes, Livelihoods & Entreprises (PRPLE)

## Component 2: Agriculture Systems Adaptation Program (ASAP)

Ensuring food security, improved nutrition and livelihoods

- Support to extension services : adoption of relevant agri practices
- Support of the model farms and demonstration plots
  - Both traditional and moderns
  - Agroforestry
- Development of businesses in green inputs and technologies
- Agro-biodiversity and seed systems
- Supporting Early Warning Systems in Agriculture
- Landless households' production & nutrition



# Participatory Recovery of Productive Landscapes, Livelihoods & Enterprises (PRPLE)

## **Component 3: Private sector and employment recovery**

- Market aligned vocational training and livelihood programs
- On-site business coaching and training
- Market networking events
- Business grants to restore MSMEs
- Sustainable energy development
- Cap building in green businesses: adoption and promotion of good practices
- Innovative Solutions Scale-up

# Multi hazard Early warning systems



# Hazard mapping

- Droughts and floods
  - Huge impact on agriculture production, livelihoods and lives
- Extreme heat
  - Impact on livelihood, economic activities, esp urban context
  - Different vulnerability by group of population
- Sandstorms, fires (ex: Latakia)
  - Impact on livelihoods, ecosystems and habitats

# Challenges identified

Lack of reliable data  
for accurate  
forecasting

Damage to  
infrastructure

Extreme vulnerability  
and limited adaptive  
capacities

Institutional  
capacities on DRM,  
including at local level

Limited Access to  
information for local  
populations  
(appropriate and  
actionable)

Cascading impacts on  
agriculture, health,  
potential  
displacements, etc

# Hazard monitoring and Early warning systems



Obj: improve climate information services and people centered Multi hazard EWS



Improved access to services and coordination among relevant actors could enhance preparedness, agriculture services, DRM related investments (i.e: NbS) and AA



Contributing to climate information for national planning for climate adaptation and NDCs



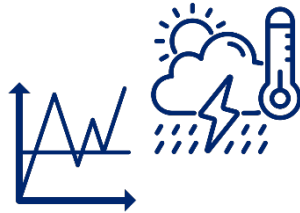
Support Anticipatory action, inform investments, agriculture production

# Early Warning for All initiatives – 4 pillars



**Risk Knowledge/  
Assessment**

Risk and vulnerability assessment through Participatory GIS approach; Multi-Hazard Risk Assessment Framework



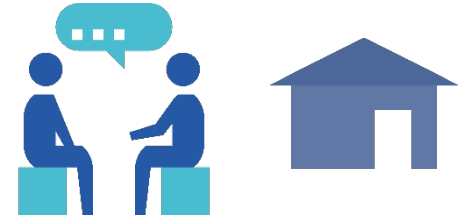
**Monitoring and  
Forecasting**

Collaboration with relevant department in increasing the density of climate monitoring in relevant areas.  
Collaboration with relevant Met agencies and private sector



**Communication and  
Dissemination**

Collaboration with private sector (telecom service provider) for improving risk communication focusing on existing barriers (literacy, disability, linguistics, etc.);  
Activation of toll free number;  
Engagement with Local Government and at-risk communities for community centric risk communication and dissemination.



**Response Capacities**

Collaboration with Provincial and Local Government and communities for improving response capacities  
Coordination with Disaster Risk Management relevant actors, local governments for improved response;  
Linking EWS with EA.

# Dashboard

[SUBSCRIBE](#)[HOW IT WORKS](#)[CONTACT](#)[DISSEMINATION](#)[ភាសាខ្មែរ](#)

## CREATE NEW DISSEMINATION

### Step 1: Which type of Hazard do you want to warn about?

Flood

Drought

Custom

Record your own message

### Step 2: How severe do you expect the hazard to be?

Extreme

Extraordinary threat to life or property. All life-saving action must be taken

Severe

Significant threat to life or property. Action must be taken

Moderate

Possible threat to life or property. Precautionary action should be taken.

Minor

Minimal to no known threat to life or property. Necessary to inform the public

- + ☐ Oddar Meanchey
- + ☐ Kep
- + ☐ Pailin
- + ☐ Tboung Khmum

### Step 6: Test warning

Phone numbers

Enter phone numbers without spaces, with 0 first (e.g. 070325055). For multiple phone numbers, add comma (,) between (e.g. 070325055, 070325040)

[Send test phone calls](#)[See text message](#)[Hear audio](#)

### Step 7: Channels



Phone calls

Sends out the warning using the well-known phone calls.



Telegram channel

Will post to the EWS1294 Telegram channel.



Radio Broadcasting

Will disseminate on ABC Radio Station.



Urban Speakers

Sends out the warning using public speakers in urban areas.

### Step 8: Send warning

**Important:** Clicking this button will start dissemination of the warning.

Once the warning has been created, it cannot be stopped

[Create warning and start dissemination](#)

Follows the **Common Alerting Protocol (CAP)**  
International Standard

# Building exposure to floods





# EWS Approach of PIN

- Multistakeholder approach
  - Whole of government approach
  - Work with telecommunication companies and Ministry of Telecommunication for dissemination
  - Collaboration with **Google Flood Hub, WINDY** for data upstream
  - Collaboration **with Apps** (used by broad population) – banks, MFIs

# Key points

- Governance: Data ownership, decision making
- Accuracy of alerts
- Hazard vs Impact based forecast
- Cascading impacts and understanding vulnerabilities
- Integrate EWS in broader DRM/ adaptation program and AA
- Gender Equality and Social inclusion

# Readiness

- Risk and capacity mapping
  - Obj: Support government to improve coordination mechanism on DRM and EWS
  - Gap assessment in processes, structures, frameworks and monitoring systems to inform DRM and EWS
  - Gaps at district and municipal level
- Market development and skills
  - Labour and market assessment (informal and micro enterprises)



**Julian Burgos**

Climate Resilience Strategy Lead

[Julian.burgos@peopleinneed.net](mailto:Julian.burgos@peopleinneed.net)

**Jan Svitálek**

Advisor for Agriculture and NRM